

MANUAL

BIM COMMUNICATION NO PROBLEM WITH BCF



This manual provides step-by-step instructions for better communication in BIM software **Pillr** with BCF.

BIM Collaboration Format (BCF) is an open standard developed and maintained by buildingSMART International.

Version 1.0 [10-08-2022]

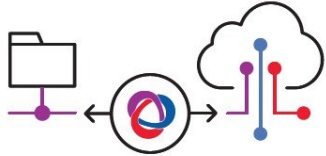
These instructions are based on:
Pillr + Pillr Addins versions 1.0.11 / 1.1.3



BIM COMMUNICATION
NO PROBLEM WITH BCF!

2.4 SHARING

- ✓ Issues can be shared through files or cloud based synchronisation.



2.4 Sharing (Offline)

In the 'Task' tab within the module 'Tasks & Modelcheck' choose at bottom for import or export [1] of tasks. First select to import or export. Then choose BCF from the pull down menu [2] and click next.

- When **importing**; select or use the drag-and-drop function to upload a received BCF or BCFzip file and click on save [3].

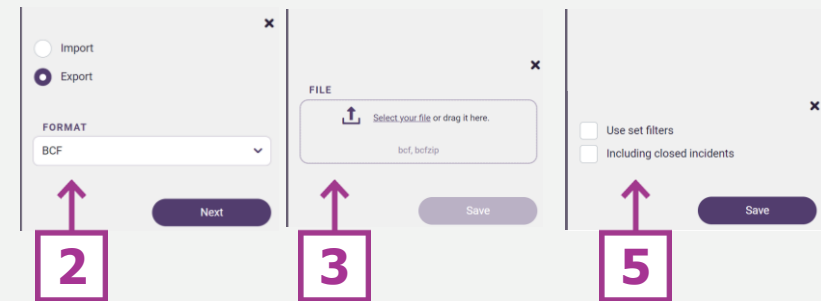
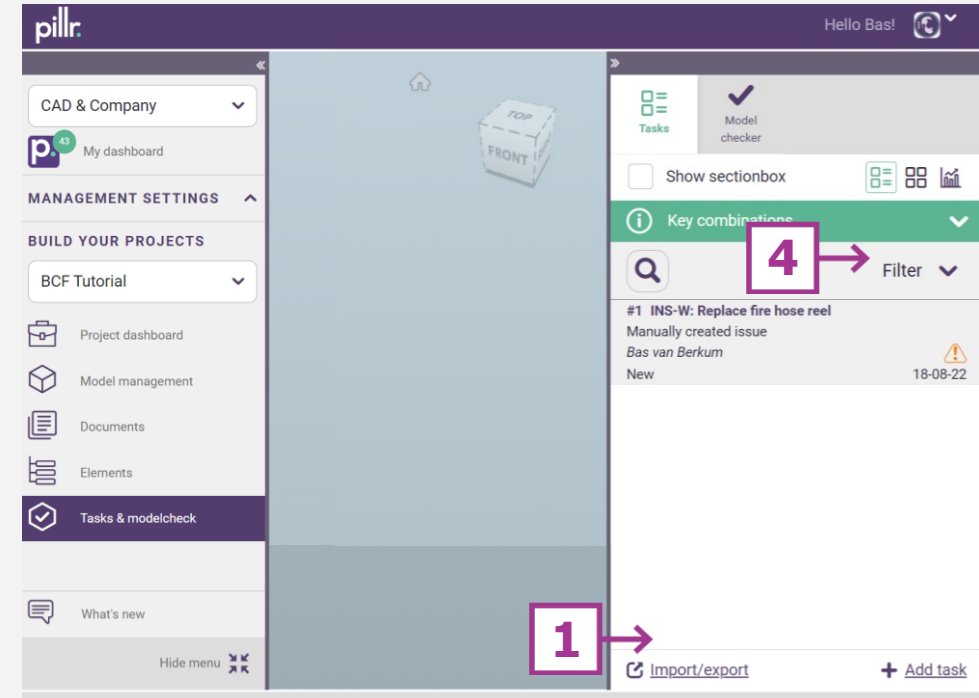
Note: Make sure that the users match each other, based on email addresses to properly synchronize the tasks on the platform. If an 'assigned to' doesn't match on the platform, the task will be assigned to the person who imported the BCF.

- When **exporting**; choose 'Filter' if a set of tasks must be defined [4]. By attaching a label to each task, filtering will be quick, clearly and easy. Create a BCF file per aspect model, user of other chosen filter.
- Then choose 'Use predefined filters' and/or whether the closed tasks should also be exported. Click on save [5].

Creating tasks

Use the right mouse button in the viewer and select 'Create task' or click on 'Add task' in the 'Task & Modelcheck' module.

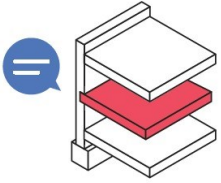
Note: Sharing BCF files in Pillr can only be done in the Cloud environment. Pillr works with version 2.1 of the BCF Format.



WHAT IN BCF?

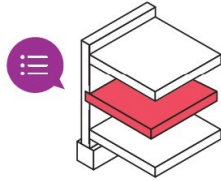
3.1 NAMING

- ✓ Give every issue a unique title.
Example: aspect and index number: hcs_025 (hollowcore slab)



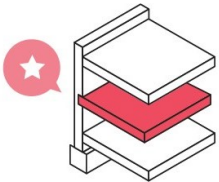
3.2 DESCRIPTION

- ✓ Describe the problem or task.
- ✓ Be (extremely) clear.
- ✓ Make it S.M.A.R.T.
Example: shape: create an opening for steel column with 30mm tolerance.



3.3 STATUS

- ✓ Give every issue a status, so everyone can track the progress.
Example: open: issue is not yet resolved.



3.4 RESPONSIBILITIES

- ✓ Assign who is responsible for resolving the issue.
- ✓ Assign only one person.



HOW IN NATIVE SOFTWARE: PILLR



3.1 Naming

Enter the title here [1] with a unique name. Keep this short and to the point.

Tip: Agree whether discipline, aspect and/or numbering will be used in the title. Use labels for easy filtering.

3.2 Description

Describe clearly what the problem is here [2]. Be clear what is wrong or needs attention and give a suggestion for solving it or how it needs to be solved.

3.3 Status

Enter here [3] the status of the task. When creating tasks, always choose 'Active'. The status will change during the process. This is kept in the history of the task.

3.4 Responsibilities

Select here [4] the person responsible to solve the task. If necessary, notify a person who needs to be informed as well.

Tip: Use the other fields to further structure the tasks.

Note: Some fields may not be part of the BCF open standard. These are therefore not included in the synchronization.

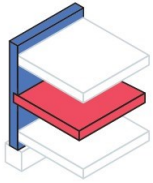
The screenshot shows the Pillr software interface for creating a task. The interface is divided into several sections:

- Title:** A text input field containing "INS-W: Replace fire hose reel" with a callout [1].
- Assignee:** A dropdown menu showing "Bas van Berkum" with a callout [4].
- Status:** A dropdown menu showing "New" with a callout [3].
- Priority:** A dropdown menu showing "Major".
- Type:** A dropdown menu showing "Request".
- Description:** A text area containing "S.M.A.R.T. description. Be extremely clear what the task is about and if possible also provide a clear solution immediately. Use the attachments for clarification if necessary." and "Move fire hose reel 1500mm to the right as agreed with fire advisor in dd. 08-08-2022" with a callout [2].
- Attachments:** A section with a "Select your file or drag it here." prompt and a list of supported file formats: "xlsx, xls, doc, docx, txt, pdf, jpg, jpeg, png".
- History:** A section showing a log entry: "Bas van Berkum created the task" on "10-08-2022".

WHAT IN BCF?

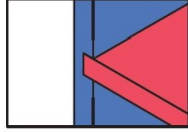
3.5 OBJECTS

- ✓ Only add relevant and visible objects.
- ✓ Make the IFC data available to the assigned person.



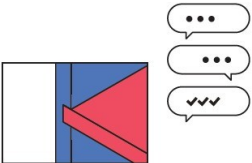
3.6 IMAGES

- ✓ The image should represent the issue correctly.
- ✓ Multiple images? Explain each image.
Example: image 1: floor clashed with outer wall.



3.7 COMMENTS

- ✓ You can add images to support comments.
- ✓ A comment is optional, but can clarify the issue and accelerate a positive outcome.



HOW IN NATIVE SOFTWARE: PILLR



3.5 Objects

Select the objects in the viewer. Then create task. The objects are now added automatically.

3.6 Images

The image [1] is automatically chosen when the task is created. In the viewer, use the options to create a section and/or hide elements to make the image as clear as possible.

Click on the image to enlarge it when viewing the task. Click on 'Edit image' to edit the image when needed. Optionally, an extra image can be added as 'attachment' or in the 'comment box'.

3.7 Comments

Write additional comments here [3] or a comment on the task. When adding an image, a comment is required.

INS-W: Replace fire hose reel

Bas van Berkum

Notify

ADD LABEL

Label X INS-W X

STATUS: New

DUE DATE: 08/18/2022

CLOSE TASK

PRIORITY: Major

TYPE: Request

VALIDATION RULE: Manually created issue

DESCRIPTION

S.M.A.R.T. description. Be extremely clear what the task is about and if possible also provide a clear solution immediately. Use the attachments for clarification if necessary.

Move fire hose reel 1500mm to the right as agreed with fire advisor in consultation on dd. 08-08-2022

ATTACHMENTS

Select your file or drag it here.

xlsx, xls, doc, docx, txt, pdf, jpg, jpeg, png

COMMENTS

3

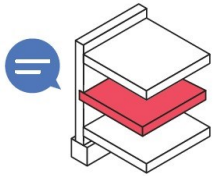
HISTORY

Bas van Berkum created the task

10-08-2022

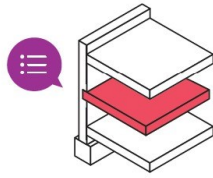
3.1 NAMING

- ✓ Give every issue a unique title.
Example: aspect and index number: hcs_025 (hollowcore slab)



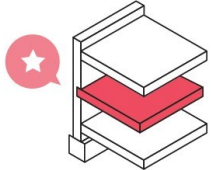
3.2 DESCRIPTION

- ✓ Describe the problem or task.
- ✓ Be (extremely) clear.
- ✓ Make it S.M.A.R.T.
Example: shape: create an opening for steel column with 30mm tolerance.



3.3 STATUS

- ✓ Give every issue a status, so everyone can track the progress.
Example: open: issue is not yet resolved.



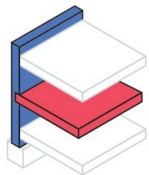
3.4 RESPONSIBILITIES

- ✓ Assign who is responsible for resolving the issue.
- ✓ Assign only one person.



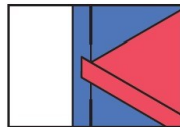
3.5 OBJECTS

- ✓ Only add relevant and visible objects.
- ✓ Make the IFC data available to the assigned person.



3.6 IMAGES

- ✓ The image should represent the issue correctly.
- ✓ Multiple images? Explain each image.
Example: image 1: floor clashed with outer wall.



3.1 Naming

Enter the title here [1] with a unique name. Keep this short and to the point.

3.2 Description

Describe clearly what the problem is here [2]. Be clear what is wrong or needs attention and give a suggestion for solving it or how it needs to be solved.

3.3 Status

By creating tasks within the addin the status is always set on 'Active'. The status will change during the process. This is kept in the history of the task.

3.4 Responsibilities

Select here [4] the person responsible to solve the task. If necessary, notify a person who needs to be informed as well.

3.5 Objects

Select the objects in the viewer. Then create task. The objects are now added automatically. The number of selected elements are shown here [5].

3.6 Images

Add the image [6] with 'make screenshot'. Adjust the screenshot with 'edit screenshot' or an image yourself with 'upload image'.

Tip: Use the other fields to further structure the tasks.

Note: Some fields may not be part of the BCF open standard. These are therefore not included in the synchronization.

Download the addin on [Downloads | Pillr](#)

The screenshot shows the 'Create a new task' form in the Pillr software. The form is titled 'Hello Bas' and is for 'Organization: CAD & Company' and 'Project: BCF Tutorial'. The form includes the following fields and options:

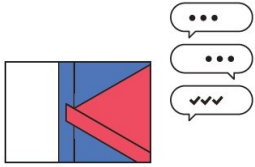
- Title:** 'INS-W: Replace fire hose reel' (Callout 1)
- Labels:** A dropdown menu.
- Selection:** '1 elements' (Callout 5)
- Type:** 'Request' (dropdown)
- Priority:** 'Major' (dropdown)
- Assign to:** 'Bas van Berkum' (dropdown) (Callout 4)
- Notify to:** 'Make a choice' (dropdown)
- Due date:** '18-8-2022' (calendar icon)
- Description:** 'S.M.A.R.T. description. Be extremely clear what the task is about and if possible also provide a clear solution immediately. Use the attachments for clarification if necessary. Move fire hose reel 1500mm to the right as agreed with fire advisor in consultation on dd. 08-08-2022' (Callout 2)
- Attach file:** 'Select a file' (dropdown)
- Image:** A 3D model of a slab with a red layer (Callout 6)

Additional options include 'Bind model to active project', 'Edit image', 'Make screenshot', and 'Upload image'. The form also has 'Clear form', 'Previous', 'Next', 'Add task', and 'Publish' buttons.

WHAT IN BCF?

3.7 COMMENTS

- ✓ You can add images to support comments.
- ✓ A comment is optional, but can clarify the issue and accelerate a positive outcome.



HOW IN NATIVE SOFTWARE: PILLR ADDINS V. 1.0.11 / 1.1.3



3.7 Comments

Write additional comments here [1] or a comment on the task.
When adding an image, a comment is required.

#1 INS-W: Replace fire hose reel

Assigned to: Bas van Berkum
Notified to: Make a choice
Label: INS-W

Created by: Bas van Berkum
Creation date: 08-10-2022 10:15
Last modified: 08-10-2022 10:15

Open task on platform

Status: New
Priority: Major
Type: Request
Due date: 18-8-2022
Validation rule: Manually created issue

Description:
S.M.A.R.T. description. Be extremely clear what the task is about and if possible also provide a clear solution immediately. Use the attachments for clarification if necessary.

Move fire hose reel 150mm to the right as agreed with fire advisor in consultation on dt. 08-08-2022

Add comment

Save

Previous Next



BIM COMMUNICATION

NO PROBLEM WITH BCF!

This manual has been prepared as an aid, the information communicated in this document is to be used at your own risk. There is no guarantee that the information provided is correct. The author and compiler cannot be held liable for any damage that may result from the use of this document or the application of the advice contained in this document.

Author Pillr: Bas van Berkum (CAD & Company)